

HITACHI

# airCore 700

—  
**Duct EZY**  
**Ducted Kit Packages**





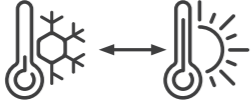
Cooling & Heating





air



The **airCore 700** stands as Hitachi's flagship residential ducted system. It delivers outstanding cooling and heating performance, showcasing a wide capacity range and efficient operation in diverse ambient temperatures, while guaranteeing uncompromised comfort.

**Duct EZY** are ready designed, ducted air conditioning packages. Designing a ducted system is a specialised and technical process. **Duct EZY** removes the need to do so, by providing a pre-designed package, specifically engineered duct kit without compromising optimal performance. Whether for the home, office or shop you can now, at an affordable price, enjoy the luxury of reliable ducted air conditioning.

		
QUIET CONTROL	EFFICIENT COOLING & HEATING	WIDE AMBIENT OPERATING RANGE -20°C IN WINTER* +52°C IN SUMMER

		
INDOOR UNIT FROSTWASH	WI-FI CONTROL OPTION	BACKLIT COLOURED CONTROLLER

		
ENERGY USAGE MONITORING	NIGHT QUIET OPERATION	POWER SAVING SETTING

	
7-DAY OPERATION SCHEDULING	R32 REFRIGERANT



## Contents

### Product Lineup

### Benefits & Maintenance

- 05 | Key Benefits
- 06 | FrostWash™ Self-Cleaning Technology

### Controllers

- 07 | Advanced Controls

### Duct EZY Systems

- 09 | For the home and business

### Specifications

- 11 | Features, Options & Components
- 13 | Duct EZY Specifications



## Peace of Mind with a 6 Year Warranty

The **airCore 700** ducted systems comes with a comprehensive **6 Year Warranty** on parts and labour, so you can be assured of the reliability and quality of your **airCore 700** system.

# airCore 700 Duct EZY Product Lineup

## Nominal Cooling/Heating Capacity

Cooling Capacity Range (Min-Max)  
Heating Capacity Range (Min-Max)

### 5.0/6.0 kW

1.5~6.0 kW  
1.5~7.5 kW

### 6.0/7.5 kW

1.5~7.5 kW  
1.5~9.0 kW

### 7.2/8.6 kW

2.5~8.6 kW  
3.5~10.4 kW

### 10.0/11.5 kW

3.2~12.0 kW  
3.5~14.0 kW

### 12.5/14.0 kW

4.0~14.2 kW  
4.0~16.2 kW

### 14.0/16.0 kW

5.0~16.0 kW  
5.5~18.0 kW

## Indoor Unit

Mid-Static Pressure



PPIM-2.0UFA1NQ



PPIM-2.5 UFA1NQ



PPIM-3.0UFA1NQ



PPIM-4.0UFA1NQ



PPIM-5.0UFA1NQ



PPIM-6.0UFA1NQ

## Outdoor Unit

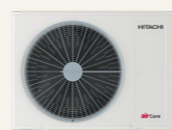
PAS-\*\*UFASNQ1 (Single Phase)  
PAS-\*\*UFASMQ1 (Three Phase)



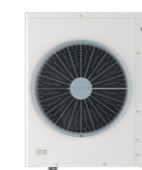
PAS-2.0UFASNQ1



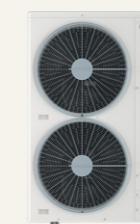
PAS-2.5UFASNQ1



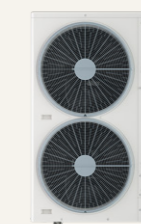
PAS-3.0UFASNQ1



PAS-4.0UFASNQ1  
PAS-4.0UFASMQ1



PAS-5.0UFASNQ1  
PAS-5.0UFASMQ1



PAS-6.0UFASNQ1  
PAS-6.0UFASMQ1

## Controllers



PC-ARFG2-Z Controller



PC-ARFG2-Z Controller



PC-ARFG2-Z Controller

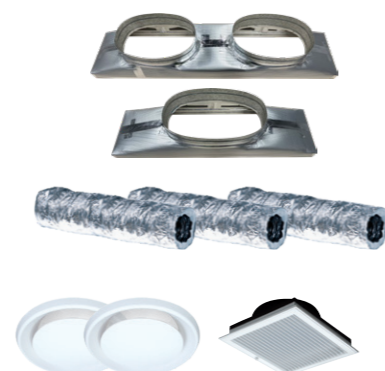


PC-ARFG2-Z Controller

## Duct Kit Package

### Duct EZY 5-6kW

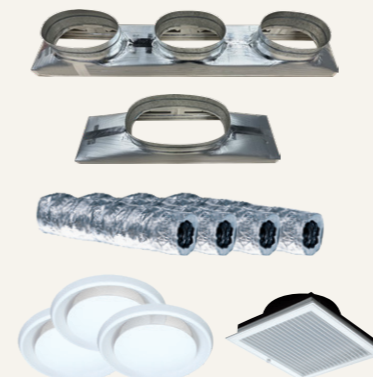
SKH-DEZ-M06



Plenum: 1 x Supply (2 spigots), 1 x Return (1 spigot)  
Flexible Duct: 2 x 6m Supply and 1 x 3m Return  
Supply Air Diffuser: 2 x RPD-250  
Return Air Grille: 1 x c/w Sq-to-Rd Adapter

### Duct EZY 7kW

SKH-DEZ-M07



Plenum: 1 x Supply (3 spigots), 1 x Return (1 spigot)  
Flexible Duct: 3 x 6m Supply, 1 x 3m Return  
Supply Air Diffuser: 3 x RPD-250  
Return Air Grille: 1 x c/w Sq-to-Rd Adapter

### Duct EZY 10kW

SKH-DEZ-M10



Plenum: 1 x Supply (3 spigots), 1 x Return (2 spigots)  
Flexible Duct: 3 x 6m Supply, 2 x 3m Return  
Supply Air Diffuser: 3 x RPD-250  
Return Air Grille: 1 x c/w Sq-to-Rd Adapter

### Duct EZY12-14kW

SKH-DEZ-M12



Plenum: 1 x Supply (4 spigots), 1 x Return (2 spigots)  
Flexible Duct: 4 x 6m Supply, 2 x 3m Return  
Supply Air Diffuser: 4 x RPD-250  
Return Air Grille: 1 x c/w Sq-to-Rd Adapter

# Key benefits of the Duct EZY system

## Four Duct EZY Kits

We offer Duct EZY systems to match all **airCore** 700 mid-static ducted systems. Duct EZY systems come with two, three or four round supply air diffusers. Depending on your needs this will allow you a range of air conditioning options, small bedrooms or offices will likely require only one diffuser outlet while living rooms and open plan areas may require more.

## Quality assured

Duct EZY are high quality air conditioning systems manufactured to the highest standards. You can trust in their absolute reliability, and to prove it Hitachi offers a **6 Year Warranty**.

## Quiet operation

Duct EZY systems are not only discreet, but also quiet. Both the in-ceiling and outdoor unit have noise levels similar to wall mounted heat pump systems of equivalent capacity. Ducted in-ceiling units are installed in the roof space resulting in a further reduction of noise levels.

## Visually discreet

Duct EZY systems allow you the luxury of discreet air conditioning. The ducted unit is installed in the ceiling providing comfort you feel but can't see. Round ceiling diffusers can be discreetly positioned to complement or fit around lighting and existing fixtures.

## Affordable costs

Duct EZY systems come already designed and packaged not needing any customisation. This makes them a more affordable alternative to other custom ducted systems.

## Hassle free installation

Duct EZY systems have been designed not only to ensure optimum performance but also a hassle free, seamless installation into new or existing buildings. Their retrofit design means there is often no need for any additional post installation repairs to either the inside or outside of your premises.

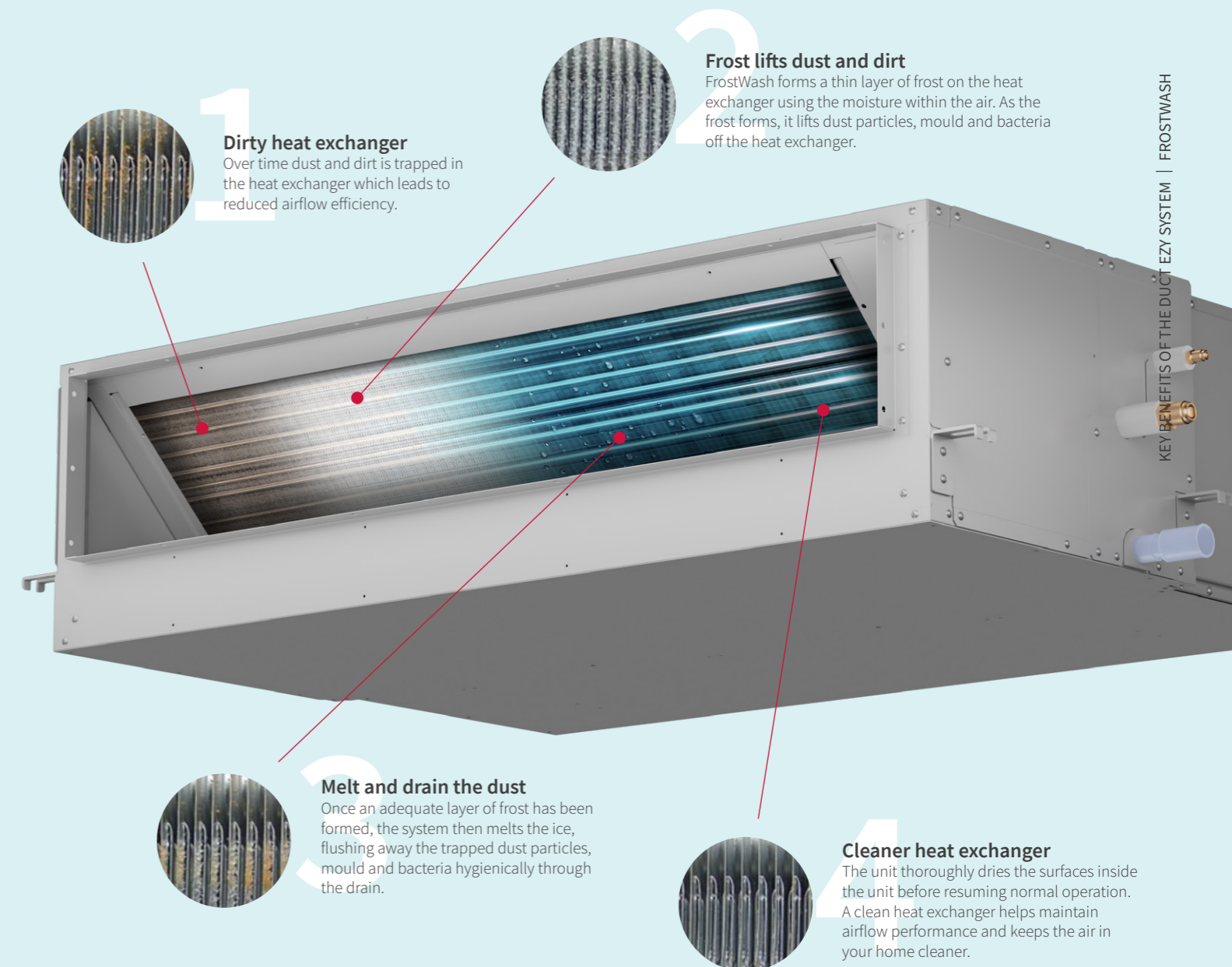
# FrostWash™ Self-Cleaning Technology



## airCore 700 Indoor Units

All **airCore** 700 ducted units are equipped with FrostWash. FrostWash freezes the dirt and dust trapped in the indoor unit heat exchanger, which is drained away with the condensate when it defrosts – effectively cleaning the heat exchanger and helping to safeguard long-term performance by maintaining good airflow.

FrostWash can be activated manually or automatically at scheduled intervals.



Hitachi Duct EZY

# Advanced Control



## Award winning...

- Colour screen
- 0.5°C temperature setting
- Visual interface
- Simple navigation
- Feature rich



reddot winner 2021



## airPoint Room 700

MODEL PC-ARFG2-Z

### Functions

Function Menu	Simple Timer
	Operation Schedule
	Power Saving Setting
	Night Quiet Operation
	Power Saving/Night Quiet Schedule
	Power Consumption Display
	AutoBoost*
	Motion Sensor Setting**
	Setback Setting
	Filter Clean Reminder
Screen Display Setting	FrostWash Setting
	Adjust Date/Time
	Run Indicator Brightness
	Display Adjustment
	Temperature
	Keypad Touch Sound
	Language Setting Chinese (Simplified/Traditional), Japanese, English (°C/°F), French, Portuguese, Spanish (English only with Premium Zoning System)

### Display Adjustment

Function	Action
Backlight Brightness	Adjust the brightness of the backlight
Backlight Dim Time	Dim Backlight after inactivity
Backlight Off Time	Turn Backlight off after inactivity
Screen Theme	Set screen theme as light or dark

\*Not available with premium zoning system

\*\*Motion sensor setting requires optional motion sensors installed

### Power Consumption Display

**Power consumption displays** the power consumption of the outdoor unit compressor. The value of each displayed in Graph/List format is 1 day (every 2 hrs.), 1 week (7 days), and 1 year (12 months).



### Operation Schedule Setting

**Operation schedule** function is a 7-day timer used to automatically start or stop the unit operation at the set time. The temperature can also be set. Up to 5 schedules can be set for each day of the week including scheduling for a holiday, six days in advance.



### Power Savings Setting

**Power Savings** setting helps reduce energy consumption with low, medium or high settings available.

### Night Quiet Operation

**Night Quiet Operation** significantly reduces the noise levels of the outdoor unit and offers the feature to schedule Night Quiet Operation for indoor units.

### Power Saving/Night Quiet Schedule

**Power Saving/Night Quiet Schedule** setting starts and stops power savings control and operation noise reduction control at the desired time. Up to 5 Power saving/night quiet schedules can be set for each day of the week.

### AutoBoost Setting\*

**AutoBoost** function provides powerful cooling and heating for 30 minutes once the operation starts to rapidly cool or heat your home.

\*Not available with premium zoning system



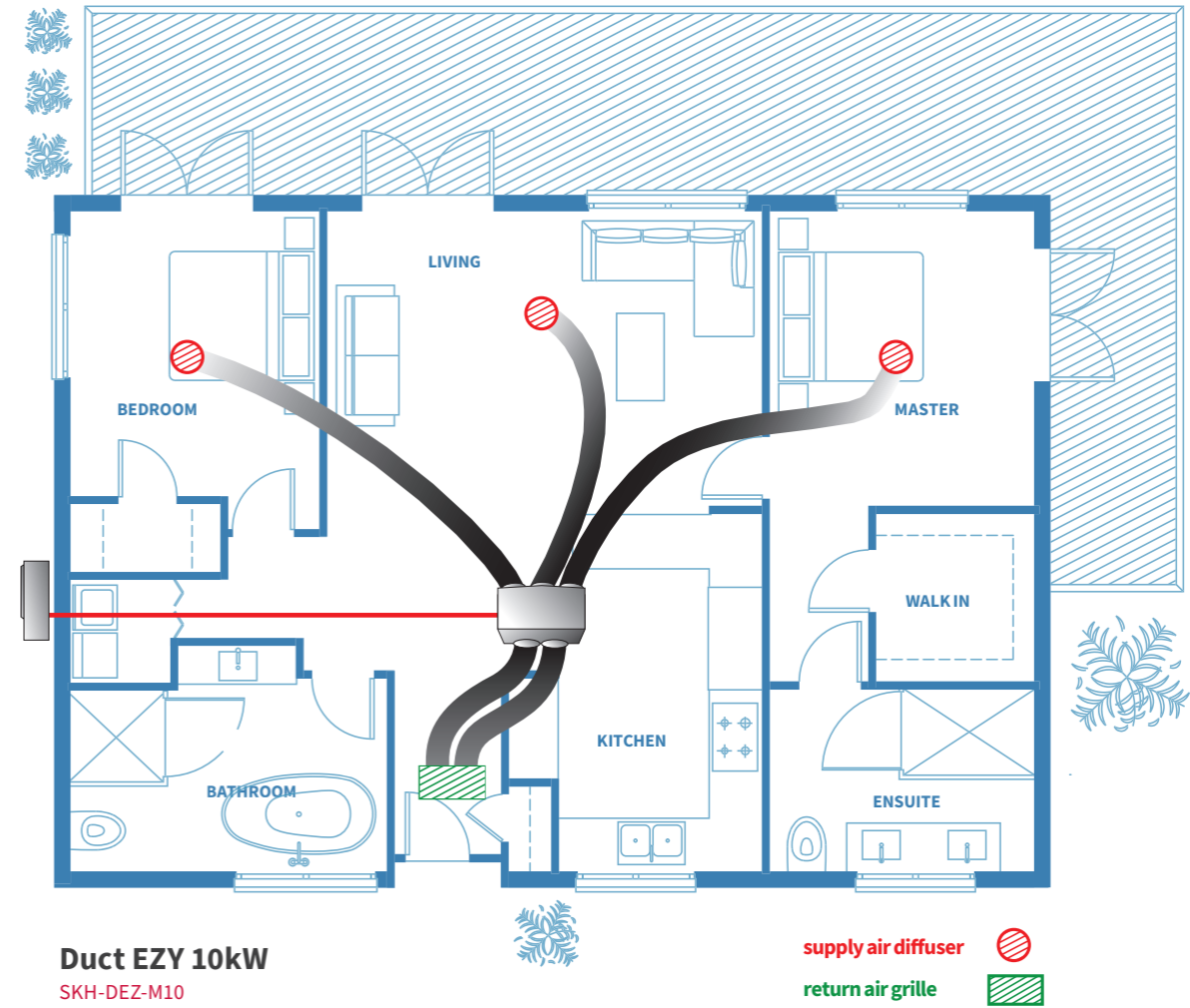
### Setback Setting

**Setback** setting is designed to maintain a minimum level of comfort in a room when it is not occupied reducing unnecessary power usage.

# Duct EZY in your home

Relax in style as a concealed Hitachi **airCore** 700 ducted unit quietly and effortlessly fills your home with comfort.

You may be in the process of considering a cooling and heating system in your home. Now with Duct EZY there is a trusted, ready engineered and affordable option for air conditioning not only a single area but your entire home. You'll rest easy with Duct EZY.



Hitachi Duct EZY

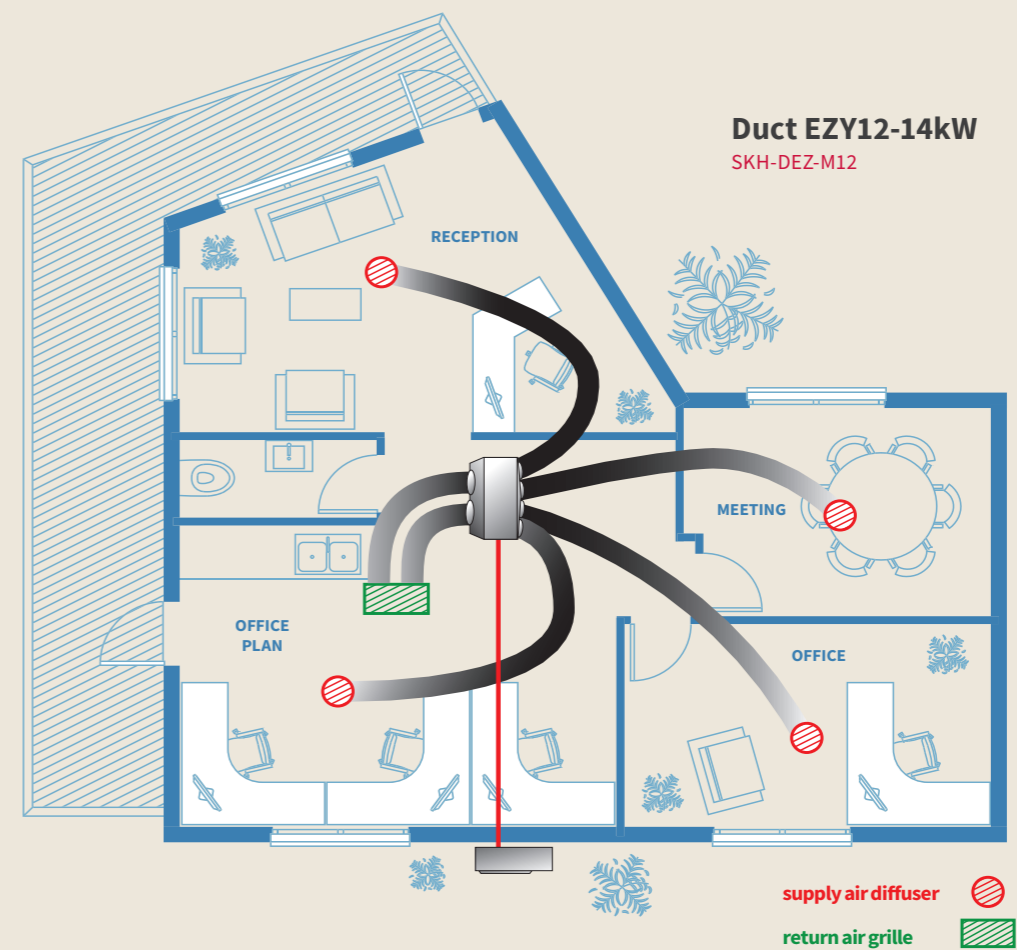
FOR THE HOME & BUSINESS

# Duct EZY in your business

Duct EZY are professionally designed, premium ducted air conditioning packages.

Duct EZY is a perfect solution for small to medium commercial premises. Shops can benefit from discreet, evenly distributed air supply to open areas. Office buildings with both open areas and small offices require efficient air supply to all these spaces.

In many cases office buildings may require multiple systems due to different heating and cooling requirements within the building. Duct EZY, with its offering for six different sized systems, is a reliable and economical solution.



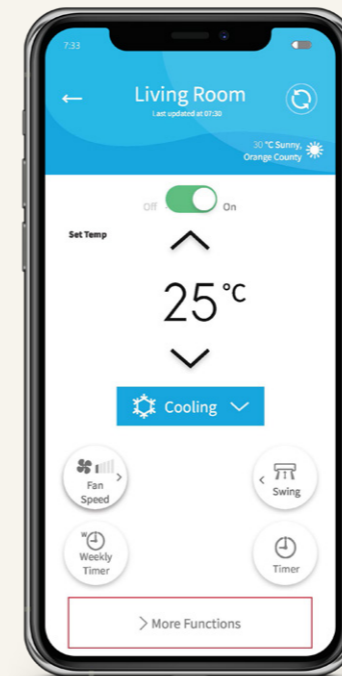
# Features & Options

6 Year Warranty	•	Automatic Fan Speed	•
Indoor Unit Frostwash	•	Automatic Operation (Cool/Heat) *	•
Wi-Fi Control Option	■	Auto Restart Function	•
52°C High Ambient Temperature Cooling Operation	•	Set Temperature Auto Reset *	•
-20°C Low Ambient Temperature Heating Operation	•	Temperature Setpoint Limits *	•
Power Usage Monitoring	•	+/-0.5°C Temperature Setting	•
Backlit Coloured Display Wall Controller	•	Child Keypad Lock	•
On/Off Timer	•	Self-Diagnostics	•
7-Day Operation Scheduling	•	Filter Clean Reminder	•
Power Saving Setting	•	Motion Sensor Option	■
Night Quiet Operation	•	DRED 1, 2 & 3 Compatible	•
Power Saving/Night Quiet Scheduling	•	Room/Zone Naming	•
Setback Setting	•	NFC Setup *	•
Dry Mode Operation	•	Auto ESP Adjustment	•

\*Must be activated through the controller at installation

- Standard
- Optional Accessory

# Wi-Fi Control



## airCloud Go

Connect your Hitachi AC to **airCloud Go** via Wi-Fi and remotely control individual indoor units or premium zoning systems.

**More airCloud Go features for better indoor climate control from the convenience of your phone**

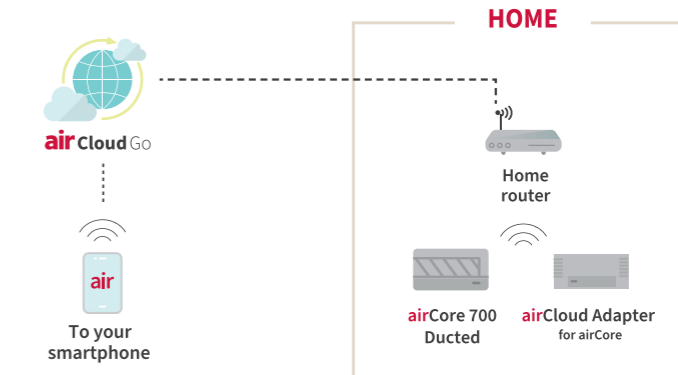
- Turn the air conditioner on/off and set the desired temperature and fan speed.
- Program your air conditioning operation with the Simple Timer and/or Weekly Timer.
- Pair your account with unlimited air conditioners.
- Invite up to 20 users to manage each air conditioner.
- Connect with your smart speaker. Fully-compatible with Amazon Alexa and Google Assistant



## airCloud Adapter

MODEL (GA-WFG)

airCloud Adapter is compatible with the **airCloud Go** App, enabling remote control of **airCore 700** ducted systems.



## Duct EZY Components

MODEL	Duct EZY 5-6kW		Duct EZY 7kW	Duct EZY 10kW	Duct EZY 12-14kW	
Indoor	PPIM-2.0FA1NQ	PPIM-2.5FA1NQ	PPIM-3.0FA1NQ	PPIM-4.0FA1NQ	PPIM-5.0FA1NQ	PPIM-6.0FA1NQ
Outdoor	PAS-2.0UFASNQ1	PAS-2.5UFASNQ1	PAS-3.0UFASNQ1	PAS-4.0UFASNQ1	PAS-5.0UFASNQ1	PAS-6.0UFASNQ1
Plenums*	1 x supply (2 spigots) 1 x return (1 spigot)	1 x supply (2 spigots) 1 x return (1 spigot)	1 x supply (3 spigots) 1 x return (1 spigot)	1 x supply (3 spigots) 1 x return (2 spigots)	1 x supply (4 spigots) 1 x return (2 spigots)	1 x supply (4 spigots) 1 x return (2 spigots)
Insulated Flexible Ducting**	2 x supply 1 x return	2 x supply 1 x return	3 x supply 1 x return	3 x supply 2 x return	4 x supply 2 x return	4 x supply 2 x return
Supply Diffuser - Round**	2 x RPD	2 x RPD	3 x RPD	3 x RPD	4 x RPD	4 x RPD
Return Grille c/w Sq-to-Rd Adaptor**	1	1	1	1	1	1
Controller	PC-ARFG2-Z	PC-ARFG2-Z	PC-ARFG2-Z	PC-ARFG2-Z	PC-ARFG2-Z	PC-ARFG2-Z
Duct Tape Roll	1 x 30m	1 x 30m	2 x 30m	3 x 30m	4 x 30m	4 x 30m

\* For attachment to Indoor unit.

\*\* See the specification table for sizes.

# Specifications

IDU ODU			PPIM-2.0UFA1NQ PAS-2.0UFASNQ1	PPIM-2.5UFA1NQ PAS-2.5UFASNQ1	PPIM-3.0UFA1NQ PAS-3.0UFASNQ1	PPIM-4.0UFA1NQ PAS-4.0UFASNQ1	PPIM-5.0UFA1NQ PAS-5.0UFASNQ1	PPIM-6.0UFA1NQ PAS-6.0UFASNQ1
Cooling	Rated Capacity	kW	5.0	6.0	7.2	10.0	12.5	14.0
	Capacity Range[Min~Max]	kW	1.5~6.0	1.5~7.5	2.5~8.6	3.2~12.0	4.0~14.2	5.0~16.0
Heating	Rated Capacity	kW	6.0	7.5	8.6	11.5	14.0	16.0
	Capacity Range[Min~Max]	kW	1.5~7.5	1.5~9.0	3.5~10.4	3.5~14.0	4.0~16.2	5.5~18.0
Air Flow	Fan Speeds		6	6	6	6	6	6
	External Static Max Range	Pa	35~185	35~185	35~185	50~200	50~200	60~210
	Air Flow Range	l/s	160~350	160~350	290~500	350~630	360~680	410~730
			<b>Duct EZY 5-6kW</b> SKH-DEZ-M06	<b>Duct EZY 7kW</b> SKH-DEZ-M07	<b>Duct EZY 10kW</b> SKH-DEZ-M10	<b>Duct EZY 12-14kW</b> SKH-DEZ-M12		
Duct EZY Model	Air Outlet / Inlet		2 / 1	2 / 1	3 / 1	3 / 1	4 / 1	4 / 1
	Supply Air Duct: ** Diameter / length	mm/m	Ø250 / 6	Ø250 / 6	Ø250 / 6	Ø250 / 6	Ø250 / 6	Ø250 / 6
	Return Air Duct: ** Diameter / length	mm/m	Ø350 / 3	Ø350 / 3	Ø400 / 3	Ø350 / 3	Ø350 / 3	Ø350 / 3
	Air Outlet Diffusers (RPD)	mm	Ø250	Ø250	Ø250	Ø250	Ø250	Ø250
	Air Inlet Grille (With Hinged Filter)	mm	400 x 400	400 x 400	512 x 512	900 x 450	900 x 450	900 x 450
Indoor Unit	Sound Levels (Hi2/Hi1/Hi/Med/Lo/Slo)	SPL dB(A)	39/36/34/30/24/21.5	39/36/34/30/24/21.5	38/36/34/31/26/24	41/39/36/34/30/27	43/40/38/36/30/28	45/44/40/38/35/32
	Dimensions (W x H x D)	mm	900(+75)×270×720	900(+75)×270×720	1100(+75)×300×800	1400(+75)×300×800	1400(+75)×300×800	1400(+75)×300×800
	Weight	kg	30	30	40	48	48	48
Outdoor Unit	Sound Levels (Cool / Heat / Night)	SPL dB(A)	53/54/51	53/54/51	53/54/51	56/57/54	56/57/54	56/57/54
	Dimensions (W x H x D)	mm	900×665×320	900×665×320	900×665×320	950×990×320	950×1380×320	950×1380×320
	Weight	kg	42	42	44	86.5	98.5	108
Guaranteed Temperature Operation Range	Cooling	°C (db)	-5~52	-5~52	-5~52	-5~52	-5~52	-5~5.2
	Heating	°C (wb)	-20~15.5	-20~15.5	-20~15.5	-20~15.5	-20~15.5	-20~15.5
Refrigerant type	Type		R32	R32	R32	R32	R32	R32
	Charge	kg	1.2	1.2	1.4	3.0	3.1	3.4
Refrigerant pipe	Pipe Connection Sizes: Liquid / Gas	mm	Φ6.35/Φ12.7	Φ6.35/Φ12.7	Φ6.35/Φ12.7	Φ9.52/Φ15.88	Φ9.52/Φ15.88	Φ9.52/Φ15.88
	Max Pipe Length	m	50	50	75	75	75	75
	Max. Pre-charged Length	m	30	30	30	30	30	30
	Max. Height Difference	g/m	30	30	30	30	30	30
Electrical	Power Supply*	V/Ph/Hz	220~240V ac 50 Hz		220~240V ac 50 Hz		220~240V ac 50 Hz	
	Interconnecting Wires (mains)		3 core + Earth 2.5 mm <sup>2</sup>		3 core + Earth 2.5 mm <sup>2</sup>		3 core + Earth 4.0 mm <sup>2</sup>	
	Interconnecting Wires (comms)		Twisted Pair Cable with Shield, 0.75mm <sup>2</sup> min.		Twisted Pair Cable with Shield, 0.75mm <sup>2</sup> min.		Twisted Pair Cable with Shield, 0.75mm <sup>2</sup> min.	
	Max. Current*	A	14.0	14.0	16.0	25	27.3	28.5
Option	Duct Expansion Kit	<b>Includes: Branch-Take-Off, Flexible duct Ø200/3m (x2) + Supply Diffuser (x2)</b>						

NOTES:  
\* 3 Phase 380~415V option for PAS-4/5/6  
\*\* All ducting is insulated.

# Temperzone

## NEW ZEALAND

[nzsales@temperzone.com](mailto:nzsales@temperzone.com)

Auckland: (09) 279 5250

Wellington: (04) 569 3262

Christchurch: (03) 379 3216

## AUSTRALIA

[nswsales@temperzone.com](mailto:nswsales@temperzone.com)

Sydney: (02) 8822 5700

[vicsales@temperzone.com](mailto:vicsales@temperzone.com)

Melbourne: (03) 8769 7600

[qldsales@temperzone.com](mailto:qldsales@temperzone.com)

Brisbane: (07) 3308 8333

[sasales@temperzone.com](mailto:sasales@temperzone.com)

Adelaide: (08) 8115 2111

## DISTRIBUTORS

Newcastle: (02) 4962 1155

Perth: (08) 6399 5900

Launceston: (03) 6331 4209



Bosch Home Comfort Group  
[www.hitachiaircon.com](http://www.hitachiaircon.com)

Bosch Home Comfort Group  
is a trademark Licensee of  
Hitachi, Ltd.



WARRANTY

Must be maintained in accordance with maintenance recommendations.

[hitachiaircon.co.nz](http://hitachiaircon.co.nz)  
[hitachiaircon.com.au](http://hitachiaircon.com.au)



The specifications of this catalogue may change without prior notice to allow Hitachi Cooling & Heating to incorporate the latest innovations for its customers. The information contained in this catalogue is merely informative. Hitachi Cooling & Heating declines any responsibility in the broadest sense, for damage, direct or indirect, arising from the use and / or interpretation of the recommendations in this catalogue.