



airnex  
chilled water fan coils

CHILLED WATER

# Fan Coil & Air Handling Units



temperzone  
climate innovations

Chilled Water  
Solutions For  
Every Project



# How We Combine Superior Performance And Energy Savings

In a complex world of chilled water technology, Temperzone offer a wide range of solutions.


**The sky's the limit with Temperzone water-cooled systems**

Temperzone has an extensive range of chilled water products, we have the product to suit your air movement requirements.

All models can be air flow controlled to match the required load profile either through simple local control or through a building management system.

The premium range incorporates EC fan technology, offering a higher efficiency operation compared to traditional AC alternatives.

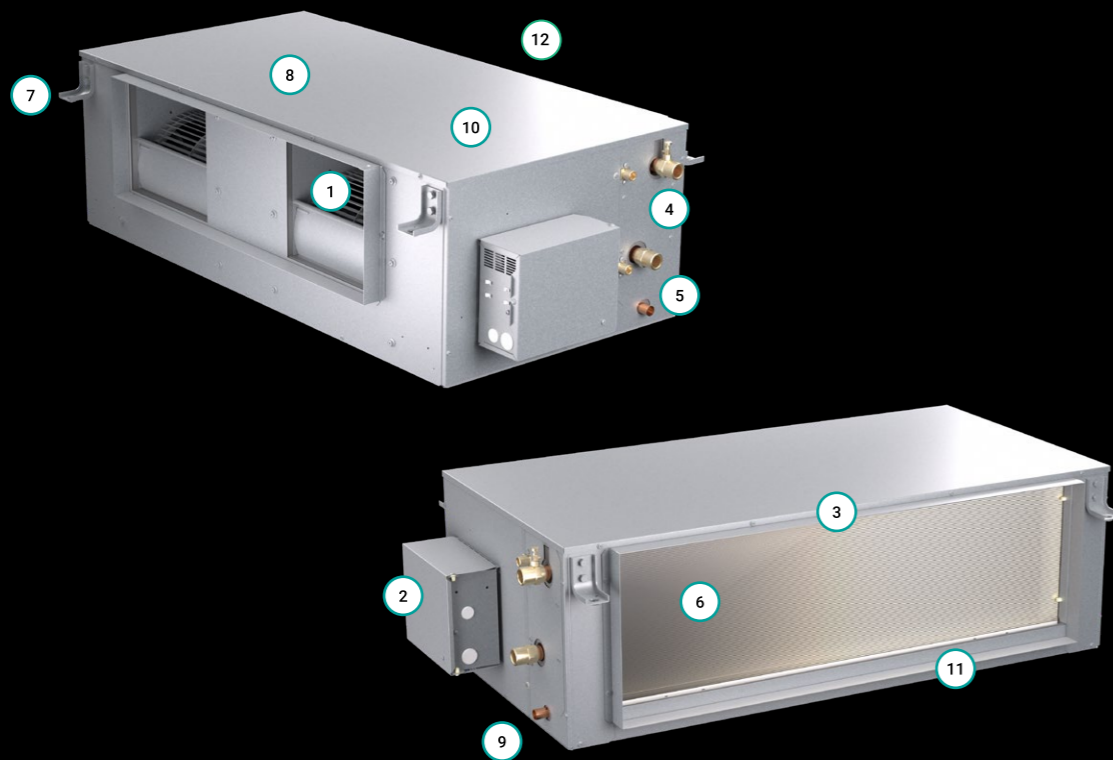
All Temperzone units incorporate high efficiency heat transfer coils to extract the most out of your chilled water system. Temperzone units have a range of heat transfer coil options adaptable to a wide spectrum of chilled water system operating parameters. Whatever the water temperature and flow rate requirements, Temperzone has a solution to match your needs.

	Hush range <b>IMDLQ-Y</b> (Low Profile)	08
	Evolve range <b>IMDL-Y</b> (Low Profile)	10
	Evolve range <b>IMD-Y</b> (Standard Compact Profile)	12
	Premium range <b>IXDL-Y</b> (Multizone)	14
	Advantage range <b>GMW</b> (Underceiling)	16
	Advantage range <b>IJD</b> (AHU)	18
	Clever range <b>MT</b> (AHU)	20

# Discover Evolve, Our Latest Fan Coil Unit Innovation

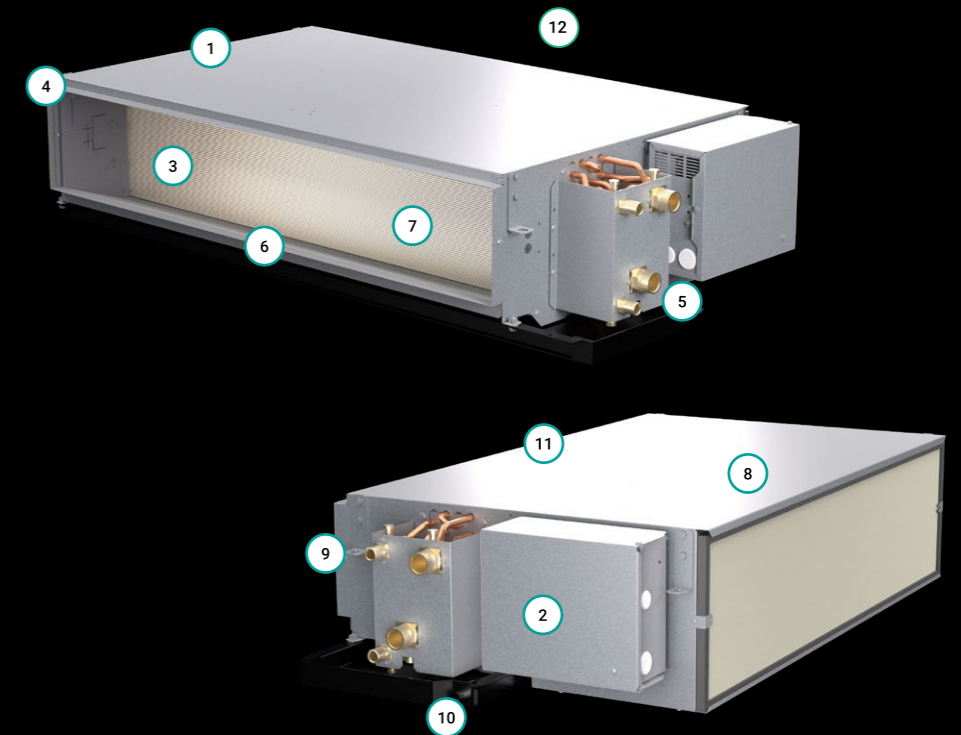
Evolve IMD-Y are our standard compact fan coil units, featuring nine individual units with nominal airflows from 450 l/s to 2,850 l/s

- 1** High static EC fan motors
- 2** 0-10Vdc or three-speed fan speed control
- 3** PTC electric heat elements with SSR control relays
- 4** Cooling coil with optional heating coil or electric heat
- 5** Standard and opposite hand units
- 6** Hydrophilic coated coil fins
- 7** Spring mounting kits
- 8** Foil-faced thermal insulation
- 9** Painted galvanised steel drain tray
- 10** Galvanised steel construction
- 11** Filter box options
- 12** Compliant with AS/NZS standards



Evolve IMDL-Y are our low profile fan coil units, featuring four individual units with nominal airflows from 200 l/s to 650 l/s

- 1** High static EC fan motors
- 2** 0-10Vdc or three-speed fan speed control
- 3** PTC electric heat elements with SSR control relays
- 4** Low profile units with heights of 255mm and 265mm
- 5** Cooling coil with optional heating coil or electric heat
- 6** Standard and opposite hand units
- 7** Hydrophilic coated coil fins
- 8** Galvanised steel construction
- 9** Spring mounting kits & filter options
- 10** Rigid moulded PVC drain trays
- 11** Foil-faced insulation
- 12** Compliant with AS/NZS standards

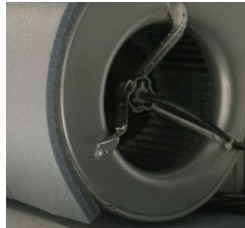


# Hush Range IMDLQ-Y (Low Profile)

## Features



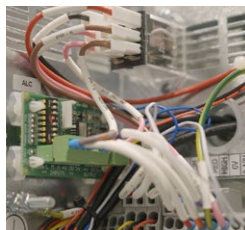
Left or Right Hand



EC Fan Motors



PTC Elements / SSR Relays



ALC Interface Controller

## Accessories



Spring Mounting Kit



# IMDLQ-Y Specifications

Model	IMDLQ 42Y	IMDLQ 62Y	IMDLQ 92Y
Air Flow (l/s) *1	190	300	380
Static Pressure (Pa) *2	91	82	112
Sound Power level SWL (dBA) *3	60.2	64.4	64
Fan Type	Forward Curved EC Motor		
Number of Fan Scrolls	1	2	2
Motor Type	Electronically Commutated (EC) DC Direct Drive		
Power Source	1 Phase 230 Volt AC 50 Hz		
Number of Motors	1	1	2
Motor Rating (W)	120	120	120 (x2)
Fan motor Full Load Amps (A) *4	0.9	1.5	2.0
Optional Electric Heating (kW) *5	1.4	2.1	2.9
Element kW total @ 1°C air on @ Maximum Air flow. (kW @ l/s)	1.86 @ 280	2.49 @ 417	3.77 @ 583
Full load amps Electric heating + fan motor (A) *6	10/1ph	13.5/1ph	19/1ph
Heat Exchanger Type	Hydrophillic Aluminium Corrugated Plate Fins To Expanded Rifled		
Finish	Zinc Galvanised Steel		
Test Pressure	2100 kPa		
Cooling/Heating Medium	4 row chilled water only or 3 row chilled water plus 1 row hot water or 4 row chilled plus electric heating element		
Cooling capacity (kW) *7	5.4	7.7	10.5
CHW water flow (l/s)	0.25	0.30	0.60
CHW pressure drop (kPa)	27.9	29.4	16
Heating capacity (kW) *8	4.8	6.7	8.7
HW water flow (l/s)	0.10	0.08	0.18
HW pressure drop (kPa)	33.0	28.1	23.0
Connection Sizes Cooling Coil (mm)	Ø 20 (3/4" BSP)		Ø 25 (1" BSP)
Connection Sizes Heating Coil (mm)	Ø 13 (1/2" BSP)		Ø 13 (1/2" BSP)
Air Filter Type	G2 / EU2 Washable		
Number of Air Filters	1	1	1
Air Filter Size (mm)	505 x 246 x 13	755 x 246 x 13	1005 x 256 x 13
Dimensions (mm) W x D x H	682 x 639 x 255	932 x 639 x 255	1194 x 639 x 265
Weight Incl. Water (kg) *9	18	28	39
Nett Dry Weight (kg) *9	17	26	36
Shipping Weight (kg) *9	17	27	37

Notes:

\*1 Nominal/high air flow for capacity rating at input and approx 50Pa external static.  
 \*2 Maximum static pressure available at nominal/high air flow when operating at 10V fan input.  
 \*3 Sound Power levels (SWL) are specified when operating at nominal/high air flow with 50Pa external static pressure. SPL data available.  
 \*4 Fan Motor FLA @ 3 m/s face velocity.  
 \*5 Nominal electric heat at 15°C air on and nominal/high air flow.

\*6 Full load amps including fan motor load, per phase, @ 3m/s face velocity and @ 1 degree C air on Temp.  
 \*7 Nominal cooling capacity based on 4 row high speed at 27/19 °C entering air and 7°C entering water temperature. For 3 row capacity refer to IMDL tables.  
 \*8 Nominal heating capacity based on 1 row on high speed at 21°C entering air and 80°C EWT.  
 \*9 All weights based on 3/1 coil version.

# Evolve Range IMDL-Y (Low Profile)

## Features



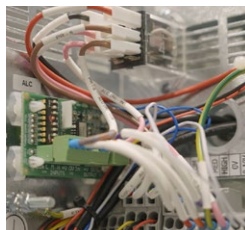
Left or Right Hand



EC Fan Motors



PTC Elements / SSR Relays



ALC Interface Controller

## Accessories



Spring Mounting Kit



# IMDL-Y Specifications

Model	IMDL 42Y	IMDL 62Y	IMDL 92Y	IMDL 132Y
-------	----------	----------	----------	-----------

Features	IMDL 42Y	IMDL 62Y	IMDL 92Y	IMDL 132Y
Air Flow (l/s) *1	200	330	400	650
Static Pressure (Pa) *2	260	275	250	250
Sound Power level SWL(dBA) *3	66.0	67.0	70.0	73.7
Fan Type	Forward Curved EC Motor			
Number of Fan Scrolls	1	2	2	3
Motor Type	Electronically Commutated (EC) DC Direct Drive			
Power Source	1 Phase 230 Volt AC 50 Hz			
Number of Motors	1	2	2	3
Motor Rating (W)	133	133 (x2)	133 (x2)	133 (x3)
Fan motor Full Load Amps (A) *4	1.5	2.5	2.5	3.5
Optional Electric Heating (kW)	1.7	2.4	3.6	4.6
Element kW total @ 1°C air on @ Maximum Air flow. (kW @ l/s)	2.0 @ 293	2.55 @ 454	3.92 @ 591	4.84 @ 893
Full load amps Electric heating + fan motor (A) *5	10/1ph	14.5/1ph	20/1ph	25/1ph
Heat Exchanger Type	Hydrophillic Aluminium Corrugated Plate Fins To Expanded Rifled			
Finish	Zinc Galvanised Steel			
Test Pressure	2100 kPa			
Cooling/Heating Medium	4 row chilled water only, 3 row chilled water plus 1 row hot water, or 4 row chilled plus electric heating element			
Cooling capacity (kW) *6	5.6	8.1	11.1	16.1
CHW water flow (l/s)	0.35	0.3	0.6	0.6
CHW pressure drop (kPa)	30.5	29	16	20
Heating capacity (kW) *7	5.0	6.9	9.2	12.7
HW water flow (l/s)	0.1	0.08	0.08	0.08
HW pressure drop (kPa)	33	28	28	28
Connection Sizes Cooling Coil (mm)	Ø 20 (3/4" BSP)		Ø 25 (1" BSP)	
Connection Sizes Heating Coil (mm)	Ø 13 (1/2" BSP)		Ø 13 (1/2" BSP)	
Air Filter Type	G2 / EU2 Washable			
Number of Air Filters	1	1	1	2
Air Filter Size (mm)	505 x 246 x 13	755 x 246 x 13	1005 x 256 x 13	703 x 256 x 13
Dimensions (mm) W x D x H	682 x 639 x 255	932 x 639 x 255	1194 x 639 x 265	1594 x 639 x 265
Weight Incl. Water (kg) *8	19	32	38	51
Nett Dry Weight (kg) *8	18	30	35	48
Shipping Weight (kg) *8	19	31	36	49

Notes: \*1 Nominal/high air flow for capacity rating at input and approx 50Pa external static.  
 \*2 Maximum static pressure available at nominal/high air flow when operating at 10V fan input.  
 \*3 Sound Power levels (SWL) are specified when operating at nominal/high air flow with 50Pa external static pressure. SPL data available.  
 \*4 Fan Motor FLA @ 3 m/s face velocity  
 \*5 Full load amps including fan motor load, per phase, @ 3m/s face velocity and @ 1 degree C air on Temp.  
 \*6 Nominal cooling capacity based on 4 row high speed at 27/19 °C entering air and 7°C entering water temperature. For 3 row capacity refer to IMDL tables.  
 \*7 Nominal heating capacity based on 1 row on high speed at 21°C entering air and 80°C EWT  
 \*8 All weights based on 3/1 coil version

# Evolve Range IMD-Y (Standard Compact Profile)

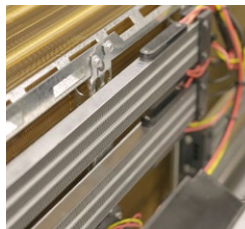
## Features



Left or Right Hand



EC Fan Motors



PTC Elements / SSR Relays



ALC Interface Controller

## Accessories



Spring Mounting Kit



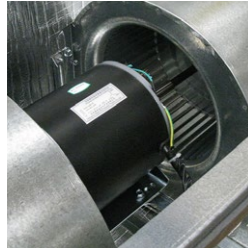
# IMD-Y Specifications

Model	IMD 97Y	IMD 137Y	IMD 172Y	IMD 212Y	IMD 282Y	IMD 352Y	IMD 422Y	IMD 552Y	IMD 702Y	
<b>Features</b>										
Air Flow (l/s) *1	450	600	750	900	1200	1500	1800	2350	2850	
Static Pressure (Pa) *2	275	230	190	275	240	310	505	230	420	
Sound Power level SWL(dBA) *3	71.1	73.2	70.4	71.4	76.2	80.9	76.9	73.1	68.7	
Fan Type	Forward Curved Centrifugal									
Number of Fan Scrolls	1			2			3			
Motor Type	Electronically Commutated (EC) DC Direct Drive									
Power Source	1 Phase 230 Volt AC 50 Hz									
Number of Motors	1			2			3			
Motor Rating (W)	500			500 (x2)		750 (x2)		1100 (x2)		1100 (x3)
Fan Motor Full Load Amps (A) *4	3.0			6.0		9.5		9.0		15.0
Optional Electric Heating (kW) fitted	4.5	8.2		11.4		18		22.5		
Element kW total @ 1°C air on @ Maximum Air flow (l/s)	5.00 @ 548	8.0 @ 714	8.7 @ 857	12.4 @ 1000	12.1 @ 1337	12.0 @ 1783	19.8 @ 2087	23.4 @ 2715	24.1 @ 3238	
Electric Heat + Fan Current (A/ph) *5	26/1ph	15.5/3ph	15/3ph	22/3ph	21/3ph	23/3ph	34/3ph	39/3ph	41/3ph	
Heat Exchanger Type	Epoxy Aluminium Corrugated Plate Fins To Expanded Rifled Copper Tube									
Finish	Zinc Galvanised Steel									
Test Pressure	2100 kPa									
Cooling/Heating Medium	4 row chilled water only, 4 row chilled water plus 1 row hot water, or 4 row chilled plus electric heating element									
Cooling capacity (kW) *6	10.7	13.2	15.7	19.2	27.0	35.0	43.1	56.2	67.3	
CHW water flow (l/s)	0.7	0.6	0.6	0.6	1.4	2.0	3.0	4.0	4.0	
CHW pressure drop (kPa)	32.4	28.9	28.9	28.9	33.1	34.0	29.8	32.8	37.0	
Heating capacity (kW) *7	11.5	14.7	16.9	18.5	29.6	39.4	46.4	60.9	72.0	
HW water flow (l/s)	0.2	0.2	0.2	0.16	0.6	0.9	0.9	1.2	1.2	
HW pressure drop (kPa)	25.7	33.3	33.3	28.8	20.2	23.7	27.4	31.5	38.0	
Connection Sizes Cooling Coil (mm)	Ø 25 (1" BSP)			Ø 32 (1 ¼" BSP)			Ø 32 (1 ¼" BSP)			
Connection Sizes Heating Coil (mm)	Ø 13 (½" BSP)			Ø 25 (1" BSP)			Ø 32 (1 ¼" BSP)			
Optional Air Filter Size (mm)	G2 panel or G4 pleated filter / disposable					G4 pleated filter / disposable				
Dimensions (mm) W x D x H	863x751x400	1038x751x400	1188x751x400	1359x751x400	1470x751x434	1489x814x554	1698x782x554	1777x782x702	2052x782x702	
Weight Incl. Water (kg) *8	52	58	64	89	101	130	136	169	207	
Nett Dry Weight (kg) *8	48	53	59	82	92	118	122	151	186	
Shipping Weight (kg) *8	53	59	66	90	100	126	131	163	199	

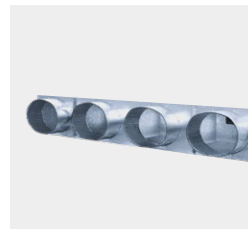
Notes: \*1 Nominal/high air flow for unit capacity rating at fan input and approx. 50Pa external static.  
 \*2 Maximum external static pressure available at nominal/high air flow at 10V fan input.  
 \*3 Sound Power levels (SWL) are specified when operating at nominal/high air flow with 200Pa external static pressure. SPL data available.  
 \*4 Fan Motor FLA @ 3 m/s face velocity  
 \*5 Full load amps including fan motor load, per phase, @ 3m/s face velocity and @ 1 degree C air on Temp.  
 \*6 Nominal cooling capacity based on 4 row high speed at 27/19 °C entering air and 7°C entering water temperature.  
 \*7 Nominal heating capacity based on 1 row on high speed at 21°C entering air and 80°C entering water temperature.  
 \*8 All weights based on 4/1 coil version

# Premium Range IXDL-Y (Multizone)

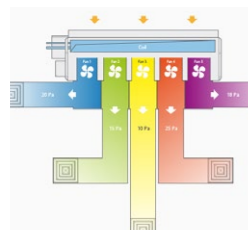
## Features



Multiple EC Motors



Multi Spigot Plenum



Multiple Zone Air Control



# IXDL-Y Specifications

Model	IXDL 40Y	IXDL 90Y	IXDL 130Y	IXDL 160Y	IXDL 200Y
Nominal Air Flow (l/s) *1	200	400	600	800	1000
Static Pressure (Pa) Max. *2	130	130	130	130	130
Sound Power level (dBA) *3	50	51	58	65	65
Air Flow Range (l/s)	0-225	0-450	0-675	0-900	0-1125
Fan Type	Forward Curved Centrifugal Double Inlet Double Width				
Power Source	1 Phase 230 Volt AC 50 Hz				
No. of 250mm Outlet Spigots	1	2	3	4	5
Number of Fans	1	2	3	4	5
Number of Motors	1	2	3	4	5
Motor Type	Electronically Commutated (EC) DC Direct Drive				
Motor Rating (W)	182	182 (x2)	182 (x3)	182 (x4)	182 (x5)
Heat Exchanger Type	Epoxy Coated Aluminium Corrugated Plate Fins To Expanded Rifled Copper Tubing				
Finish	Natural Zinc Galvanised Steel				
Test Pressure	2100 kPa				
Full Load Amps (A)	1.4	1.4 x 2 (2.8)	1.4 x 3 (4.2)	1.4 x 4 (5.6)	1.4 x 5 (7.0)
Nominal Current (A)	0.4	0.4 x 2 (0.8)	0.4 x 3 (1.2)	0.4 x 4 (1.6)	0.4 x 5 (2.0)
Cooling/Heating Medium	3 row or 4 row chilled water / 1 row or 2 row hot water				
Cooling capacity (kW) *4	4.3	9.0	12.8	16.54	20.0
CHW water flow (l/s)	0.3	0.45	0.5	0.55	0.6
CHW pressure drop (kPa)	4	13	21	29	39
Heating capacity (kW) *5	4.6	9.3	13.2	16.5	21.9
HW water flow (l/s)	0.06	0.10	0.12	0.13	0.19
HW pressure drop (kPa)	2	7	12	17	38
Coil Connection - Cooling Coil (mm)	Ø 25 (1" BSP)				
Coil Connection - Heating Coil (mm)	Ø 13 (1/2" BSP)				
Air Filter Type	Washable G2 / EU2				
Number of Air Filters	1	2	2	2	2
Air Filter Size (mm)	466 x 161 x 13	484 x 161 x 13	984 x 161 x 13	858 x 161 x 13	1058 x 161 x 13
Dimensions (mm) L x D x H	706 X 1010 X 252	1250 X 1010 X 252	1605 X 1010 X 252	1954 X 1010 X 252	2355 X 1010 X 252
Weight Incl. Water (kg)	34	53	73	92	112
Nett Dry Weight (kg)	32	49	68	84	103
Shipping Weight (kg)	34	53	72	90	110

Notes: \*1 Nominal air flow for rating unit capacity at 7V EC fan input & 50Pa external static. \*2 Maximum static pressure available at nominal air flow when operating with 10V fan input. \*3 Sound levels are specified as in situ conditions when operating at nominal air flow with 50Pa external static pressure. \*4 Nominal cooling capacity based on 4 row high speed at 27/19 entering air and 7 degree entering water temperature. \*5 Nominal heating capacity based on 1 row on high speed at 21 entering air and 80 degree entering water temperature.

# Advantage Range GMW (Underceiling)

## Features



Motorised Swing Louvre



Hinged Return Air Filter



# GMW Specifications

Model	GMW 50	GMW 70	GMW 80	GMW 140	GMW 160
<b>Features</b>					
Nominal Air Flow (l/s) *1 'H Series'	175	240	375	625	815
Nominal Air Flow (l/s) *1 'S Series'	150	170	295	520	N/A
Air Throw (m) *2	4.5	5	5.5	6	7
Sound Pressure (dBA) *3 H Series / S Series	44/34	46/34	48/42	51/43	53/-
Fan Type	Forward Curved Centrifugal Double Inlet Double Width				
Fan Motor Type	Three Speed, Direct Drive				
Power Source	1 Phase 230 Volt AC 50 Hz				
Full Load Amps (A) 'H Series'	0.45	0.9	0.7	1.4	2.0
Full Load Amps (A) 'S Series'	0.37	0.74	0.37	0.74	N/A
Heat Exchanger Type	Aluminium Corrugated Plate Fins To Expanded Rifled Copper Tube				
Test Pressure	2100 kPa				
Cooling/Heating Medium	3 Row Chill Water or 2 Row Chilled Water plus 1 Row Hot Water				
Cooling capacity (kW) *4	4.3	6.0	8.1	13.1	15.0
CHW water flow (l/s)	0.3	0.4	0.6	0.7	0.7
CHW pressure drop (kPa)	20	39	19	34	34
HW water flow (l/s)	0.06	0.09	0.1	0.15	0.15
HW pressure drop (kPa)	10	24	6	16	16
Coil Connection - Cooling 2 Row	Ø 15 (½" BSP)	Ø 15 (½" BSP)	Ø 20 (¾" BSP)	Ø 20 (¾" BSP)	Ø 20 (¾" BSP)
Coil Connection - Cooling 3 Row	Ø 15 (½" BSP)	Ø 20 (¾" BSP)	Ø 20 (¾" BSP)	Ø 20 (¾" BSP)	Ø 25 (1" BSP)
Coil Connection - Heating 1 Row	Ø 15 (½" BSP)	Ø 15 (½" BSP)	Ø 15 (½" BSP)	Ø 15 (½" BSP)	Ø 15 (½" BSP)
Finish	Polyester Powder Coat + White PVC				
Air Filter Type	Plastic Net - Washable				
Dimensions (mm) W x L x H	1000 x 690 x 190	1260 x 690 x 190	1260 x 690 x 255	1860 x 690 x 255	1860 x 690 x 255
Weight Incl. Water (kg)	28	40	51	79	79
Nett Dry Weight (kg)	27	38	48	74	74
Shipping Weight (kg)	30	41	51	78	78

\*1 Nominal air flows are on high speed for each fan series with a dry coil.

\*2 Air throw is based on a residual air velocity of 0.25m/s at 0.4m above floor level with a ceiling mounted installation.

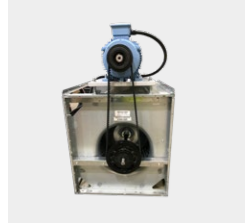
\*3 Sound level as measured with free inlet and outlet in an anechoic chamber 1m below and to the front of the unit.

\*4 Nominal cooling capacity based on 2 row high speed at 27/19 entering air and 7 degree entering water temperature.

\*5 Nominal heating capacity based on 1 row on high speed at 21 entering air and 80 degree entering water temperature.

# Advantage Range IJD (AHU)

## Feature



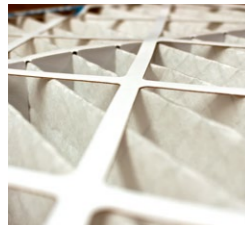
Variable Pitch Pulley

## Options



Opposite Handing

## Accessories



Commercial Grade Filters

## Custom Options



High Static EC Plug Fan



# IJD Specifications

Model ● IJD 370 ● IJD 450 ● IJD 620 ● IJD 950 ● IJD 1400 ● IJD 2000 ● IJD 2400

## Features

Air Flow (l/s) *1	1400	1800	2200	3200	5000	7500	9000
External Static Pressure (Pa) *2	430	390	380	450	410	450	500
Sound Power level (dBA) *3	86	94	94	90	92	99	97
Fan Type	Forward Curved Centrifugal Double Inlet Double Width Belt Driven						
Motor Type	Aluminium Foot Mounted TEFC IP55						
Power Source	3 Phase 415V 50 Hz						
Motor Rating (W)	2.2	2.2	3.0	4.0	7.5	(2x) 5.5	(2x) 5.5
Full Load Amps (A)	5	5	6.7	8.7	15.7	20.6	20.6
Optional Electric Heating (kW)	12	18	18	27	36	48	54
Heat Exchanger Type	Epoxy Aluminium Corrugated Plate Fins To Expanded Rifled Copper Tube						
Finish	Zinc Galvanised Steel						
Test Pressure	2100 kPa						
Cooling/Heating Medium	4 Row Or 6 Row Chilled Water Coil / 1 Row Hot Water Coil or Electric Heating Elements						
Cooling capacity (kW) *4	37.0	47.4	60.3	86.3	125.7	192.9	228.8
CHW water flow (l/s)	2.2	2.8	3.6	4.5	4.6	7.5	8.8
CHW pressure drop (kPa)	20	21	27	33	39	39	39
Heating capacity (kW) *5	28.6	36.3	45	67	106.6	160.8	190.8
HW water flow (l/s)	0.34	0.43	0.54	0.8	1.3	1.9	2.2
HW pressure drop (kPa)	0.7	0.7	1.1	1.3	3.3	2.8	2.9
Connection Sizes 4 Row Cooling Coil (mm)	Ø 32 (1¼" BSP)	Ø 32 (1¼" BSP)	Ø 32 (1¼" BSP)	Ø 40 (1½" BSP)	Ø 50 (2" BSP)	(2x) Ø 50 (2" BSP)	(2x) Ø 50 (2" BSP)
Connection Sizes 6 Row Cooling Coil (mm)	Ø 32 (1¼" BSP)	Ø 40 (1½" BSP)	Ø 40 (1½" BSP)	Ø 40 (1½" BSP)	Ø 50 (2" BSP)	(2x) Ø 50 (2" BSP)	(2x) Ø 50 (2" BSP)
Connection Sizes 1 Row Heating Coil (mm)	Ø 32 (1¼" BSP)	Ø 32 (1¼" BSP)	Ø 32 (1¼" BSP)	Ø 40 (1½" BSP)	Ø 50 (2" BSP)	(2x) Ø 50 (2" BSP)	(2x) Ø 50 (2" BSP)
Dimensions (mm) W x L x H	1270 x 1080 x 675	1270 x 1200 x 775	1520 x 1200 x 775	1675 x 1200 x 1005	2220 x 1330 x 1070	2280 x 1400 x 1675	2280 x 1645 x 1930
Weight Incl. Water (kg)	180	217	245	316	445	657	809
Nett Dry Weight (kg)	166	201	224	285	398	583	723
Shipping Weight (kg)	184	218	242	315	428	620	760

Notes: \*1 Nominal air flow at approximately 2.5m/s coil face velocity for nominal capacity rating.

\*2 Maximum static pressure available at nominal airflow with standard motor pulley adjusted to maximum pitch diameter.

\*3 Sound level as measured with free inlet and outlet in a reverberant room.

\*4 Nominal cooling capacity based on 6 row high speed at 27/19 entering air and 7 degree entering water temperature. 4 row cooling coil has approximately 85% cooling capacity and 70% water pressure drop at same temperatures and flow rates.

\*5 Nominal heating capacity based on 1 row on high speed at 21 entering air and 60 degree entering water temperature.

# Clever Range MT (AHU)

## Features



High Efficiency EC Plug Fans



Ebox Wiring Integration



EL100 Opposed Blade Dampers



Sloping Drain Trays



# MT Specifications

Model ● MT 030 ● MT 060 ● MT 120 ● MT 180 ● MT 270 ● MT 360 ● MT 450 ● MT 540

## Specifications

Air Flow (l/s) *1	750	1,500	3,000	5,000	7,500	10,000	12,500	15,000
Power supply	400V / 3 ph / 50Hz							
Number of fans	1	1	1	2	2	3	4	4
Motor rating (total) (kW)	1.3	1.7	2.8	5.6	7	10.5	14	14
Full load current (A/ph) *2	2.1	2.7	4.4	8.8	11.4	17.1	22.8	22.8

## Nominal Cooling Capacity (kW) \*3

2 row	9.6	20.0	44.4	69.5	113	106	139	171
4 row	15.0	33.3	66.6	114	171	225	305	370
6 row	19.2	40.5	82.7	140	210	295	385	465
8 row	22.0	46.7	93.5	157	235	335	425	520

## Nominal Heating Capacity (kW) \*4

1 row	18.0	40.0	79.9	128	199	216	277	305
2 row	31.7	64.6	133	222	334	363	464	519

## Dimensions (mm)

Length Fan / Coil Section	1245	1445	1845	1845	2195	2045	2045	2045
Length Filter / Plenum	1245	1445	1445	1445	1645	1645	1645	1645
Width	800	1400	1400	2050	2050	2720	3370	4020
Height (incl. base)	900	900	1500	1500	2150	2190	2190	2190
Optional Filters Cells	1	2	4	6	9	12	15	18
FCU weight *5 (kg)	162	233	400	511	791	1043	1242	1442
Inlet plenum weight - bare (kg)	86	120	157	184	343	346	387	426

\*1. Nominal Air flow based on approximately 2.5m/s coil face velocity

\*2. Motor name plate rating not necessarily current draw at nominal operating point.

\*3. Nominal Cooling capacity at nominal air flow, air entry 27/19, water in 6/out 13

\*4. Nominal Heating capacity at nominal air flow, air entry 15, water in 80/out 60

\*5. Nominal weight based on 6 row cooling coil plus 1 row heating coil, no other accessories fitted

# Range Options & Features

● Standard



Optional

The range of options available allow you to customise your desired unit, giving you ultimate control and flexibility.

Model	● IMDLQ-Y	● IMDL-Y	● IMD-Y	● IXDL-Y	● GMW	● IJD
Nominal Air Flow (l/s)	190 - 380	200 - 650	450 - 2850	200 - 1000	175 - 815	1400 - 9000
EC Fan (Y) version	●	●	●	●	N/A	□
0-10V Fan Speed Control	●	●	●	●	N/A	□
3rd Party Controls Input	●	●	●	●	●	●
High Static Fans	N/A	●	●	N/A	N/A	●

## Epoxy Coated Coil

Chilled Water Cooling	●	●	●	●	●	●
Hot Water Heating (STD)	●	●	●	●	●	●
Alternative Electric Heating	●	●	●	N/A	N/A	□

## Configuration Options

Standard Handing (RHS)*	●	●	●	●	N/A	●
Opposite Handing (LHS)*	●	●	●	□	N/A	□
Vertical Air Discharge	N/A	N/A	N/A	N/A	N/A	□

## Accessories

Washable Screen Filter	N/A	N/A	N/A	N/A	●	N/A
12mm (Washable)	●	●	□	●	N/A	N/A
50mm (Disposable)	N/A	N/A	N/A	N/A	N/A	□
Spring Hanger Kit	□	□	□	N/A	N/A	N/A
Multi-Oval Spigot	N/A	N/A	N/A	●	N/A	N/A

Notes: ● Unit handing is as follows: When facing the coil with your **front** to the airflow:  
 • If the connections are on the right side of the evaporator, then it is a right-hand unit.  
 • If the connections are on the left side of the evaporator, then it is a left-hand unit.

Model	● MT
-------	------

## Features

Nominal Air Flow (l/s)	750 - 15,000
EC Plug Fans	●
0-10V Fan Speed Control	●
3rd Party Controls Input	●

## Cooling & Heating

Chilled Water Cooling	□
Hot Water Heating	□
Alternative Electric Heating	N/A

## Configuration Options

Right-Hand**	□
Left-Hand**	□
Horizontal or Vertical Supply Air	□
Horizontal Return Air Plenum	□
Vertical Return Air Plenum	□
Return Air / Outside Air Mixing Dampers	□

## Accessories

Magnahelic Gauge	□
Internal Lighting	□
Inspection Window	□
Filters options (G4, F7 and F9)	□

\*\* Note: Unit handings follow Industry standard for AHU's.  
 When facing the coil with your **back** to the airflow:  
 • If the connections are on the right side of the evaporator, then it is a right-hand unit.  
 • If the connections are on the left side of the evaporator, then it is a left-hand unit.



[temperzone.com](http://temperzone.com)



**New Zealand**

[nzsales@temperzone.com](mailto:nzsales@temperzone.com)

**Australia**

[nswsales@temperzone.com](mailto:nswsales@temperzone.com)

[sasales@temperzone.com](mailto:sasales@temperzone.com)

[qldsales@temperzone.com](mailto:qldsales@temperzone.com)

[vicsales@temperzone.com](mailto:vicsales@temperzone.com)

**Singapore**

[sales@temperzone.com.sg](mailto:sales@temperzone.com.sg)

The specifications of this catalogue may change without prior notice to allow Temperzone to incorporate the latest innovations for its customers. The information contained in the catalogue is merely informative. Temperzone declines any responsibility in the broadest sense, for damage direct or indirect, arising from the use and / or interpretation of the recommendations in this catalogue.

**New Zealand**

Auckland 09 – 279 5250

Hamilton 07 – 839 2705

Wellington 04 – 569 3262

Christchurch 03 – 379 3216

**Australia**

Sydney 02 – 8822 5700

Adelaide 08 – 8115 2111

Brisbane 07 – 3308 8333

Melbourne 03 – 8769 7600

**Distributors**

Newcastle 02 – 4962 1155

Perth 08 – 6399 5900

Launceston 03 – 6331 4209

**Asia**

Singapore 65 – 6733 4292

Shanghai 21 – 5648 2078

